

2026 | 2027

000%

FACTS &  
FIGURES

# GOTHENBURG, a powerful engine for growth and innovation

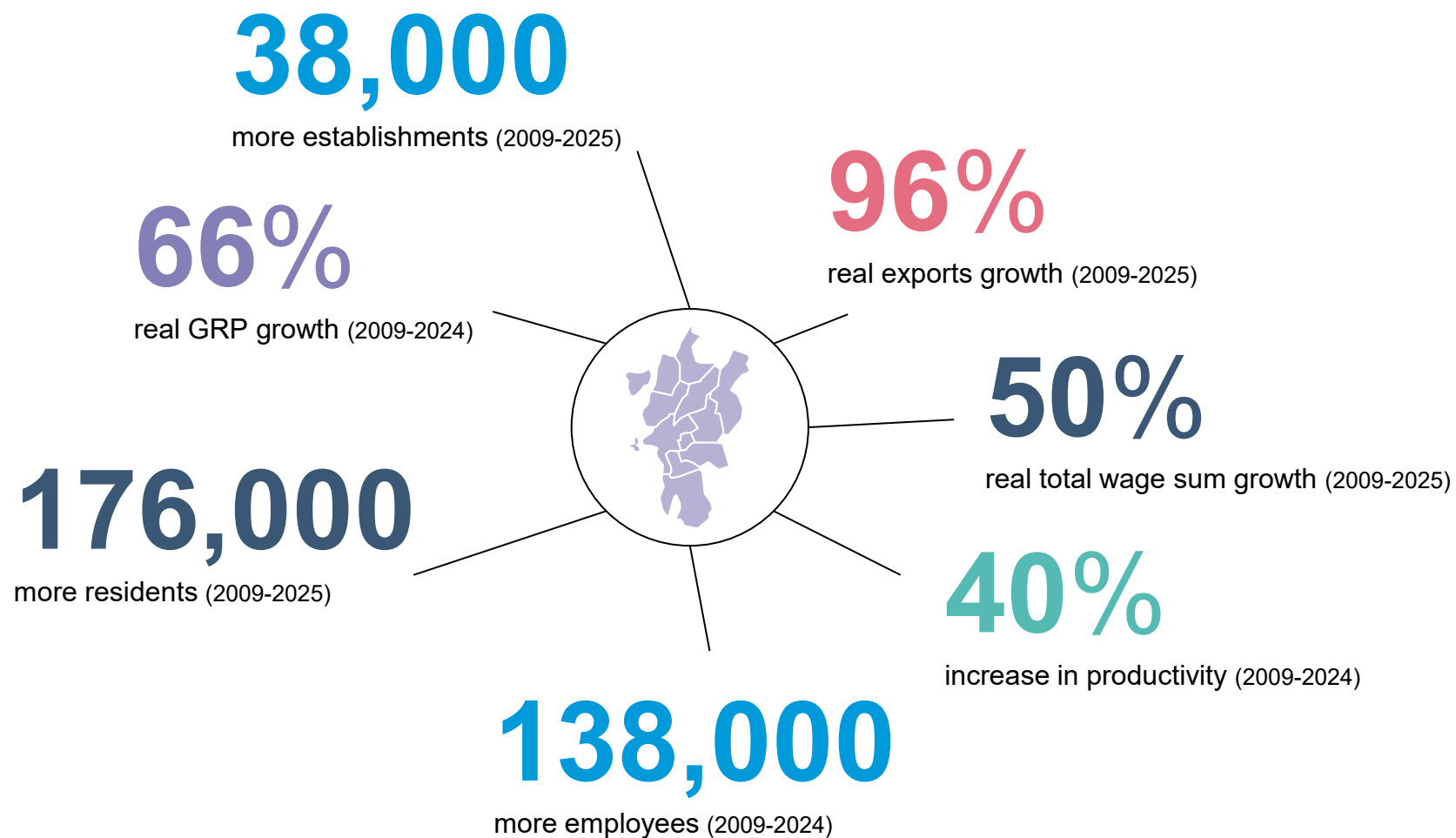
**Contact:**

SV – [businessregiongoteborg.se](https://businessregiongoteborg.se)

EN – [investingothenburg.com](https://investingothenburg.com)



## Growth in the Gothenburg region since the year 2009



Source: Statistics Sweden



# Growth strategy – to strengthen central Gothenburg and expand the labour market



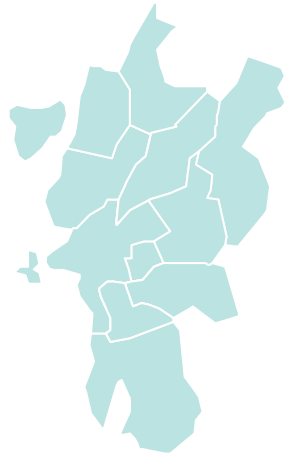
Gothenburg today

**0.6**

million residents

**+80,000**

jobs 2016-2035



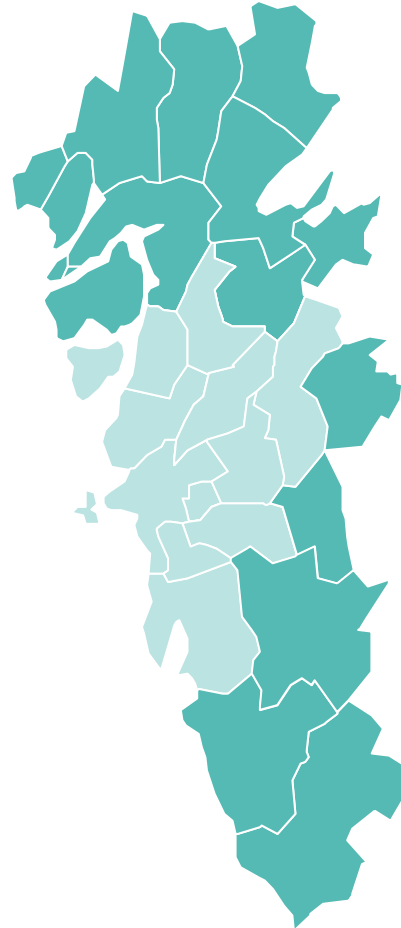
Gothenburg region today

**1.1**

million residents

**+120,000**

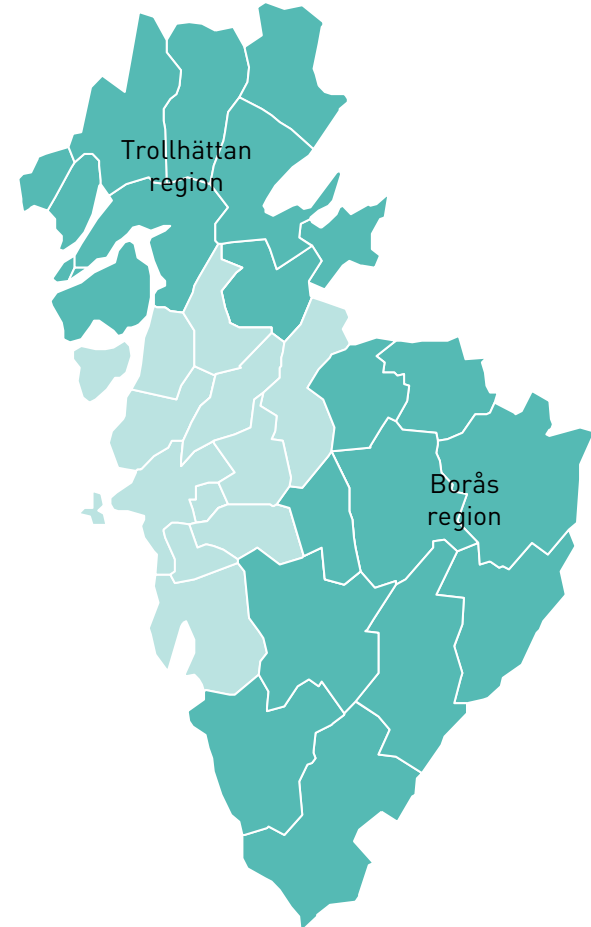
jobs 2016-2035



Gothenburg's labour market today

**1.5**

million residents



Gothenburg's labour market 2035

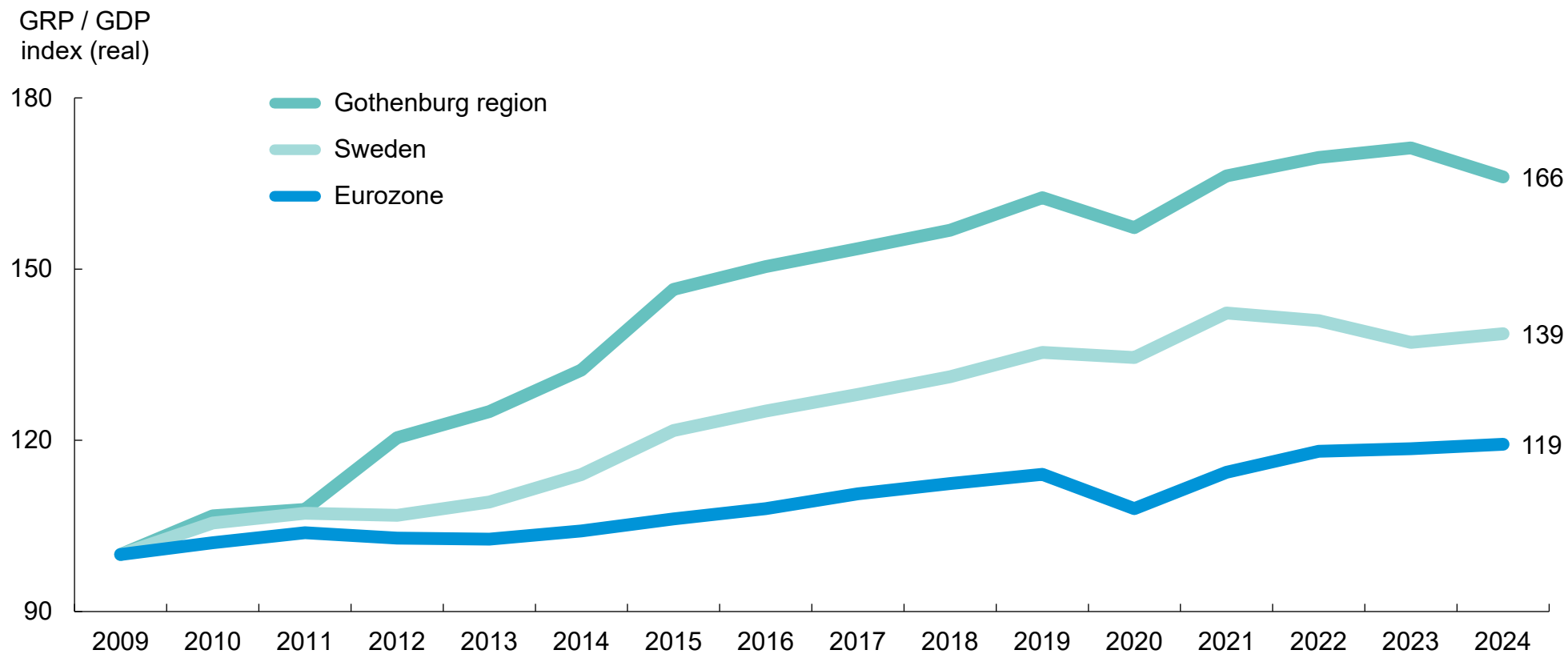
**1.7**

million residents



# A strong growth engine

REAL GRP / GDP GROWTH (INDEX 2009 = 100), 2009-2024

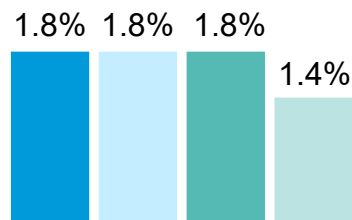


Source: OECD and Statistics Sweden



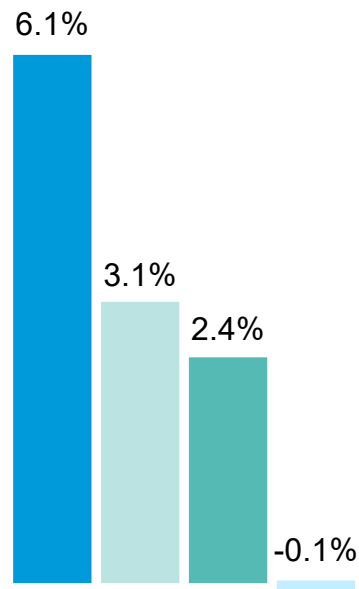
# Growth in Swedish metropolitan regions

- Gothenburg region
- Malmö region
- Stockholm region
- Sweden



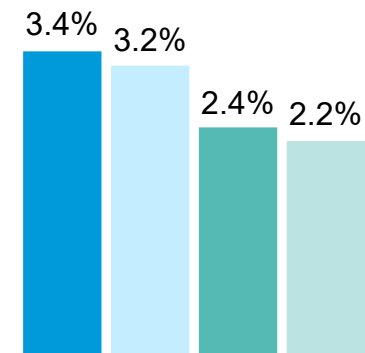
## Employment

Annual growth in number of employees  
2009-2024



## Business R&D expenditure

Annual real growth in business R&D  
2009-2023

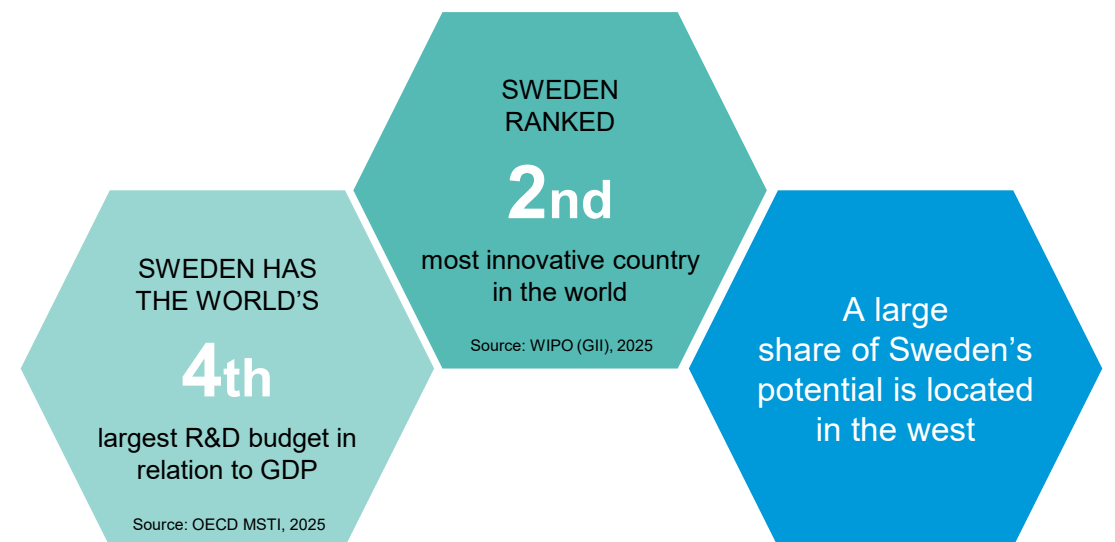


## Gross regional product (GRP)

Annual real growth in GRP  
2009-2024



## The Gothenburg region – a leading research region which is highly competitive on the international stage



### Innovation leader\*

As an innovation leader, the region scores high in several categories such as private sector investments in R&D, cloud computing, patent applications and product innovations within SMEs.

### Regional competitiveness\*

29th of 234 EU regions  
Among other things, West Sweden is praised for both its technological readiness and its innovation potential..

Source: European Commission (RCI), 2022

### Dense on innovative activity

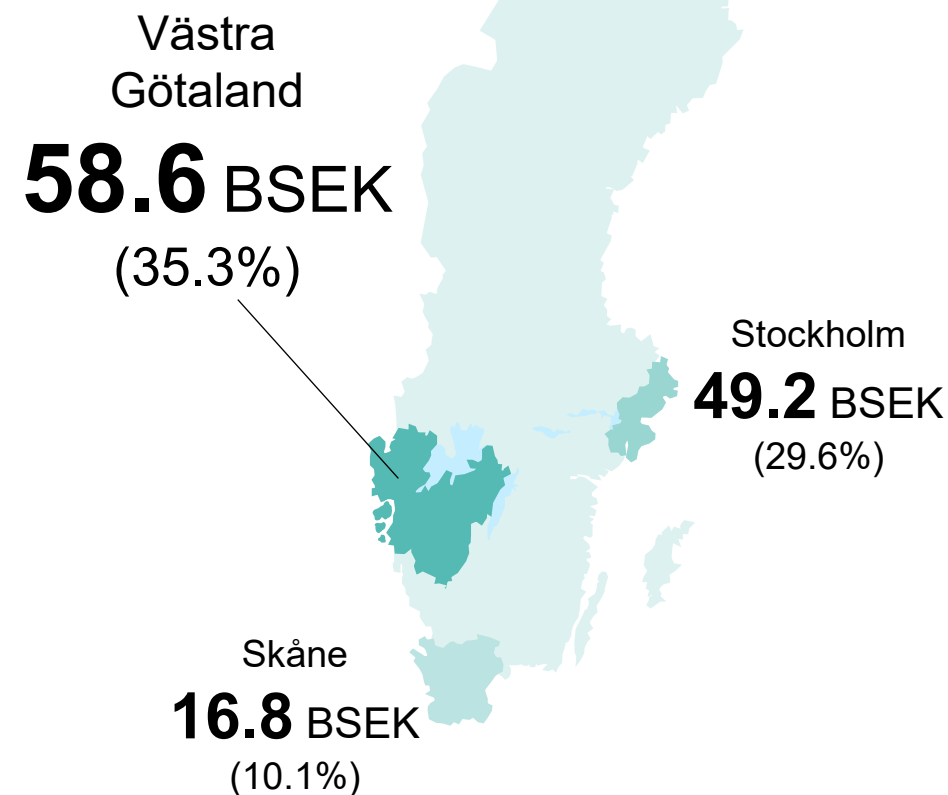
Gothenburg has the 20th highest density of inventors and scientific authors in the world.

Källa: WIPO (GII), 2025

Source: European Commission (RIS), 2025

\* Refers to West Sweden

## BUSINESS R&D EXPENDITURE IN BSEK (% OF SWEDEN'S TOTAL), 2023

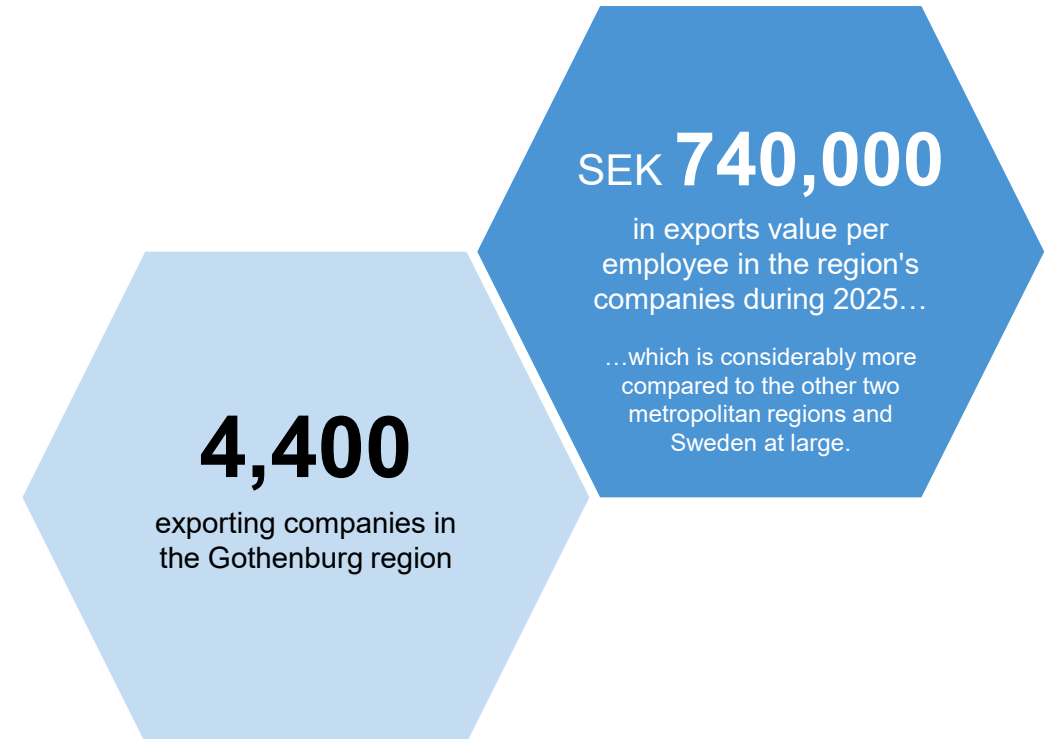




# Export of goods from companies in the region

## EXPORT DESTINATIONS 2025

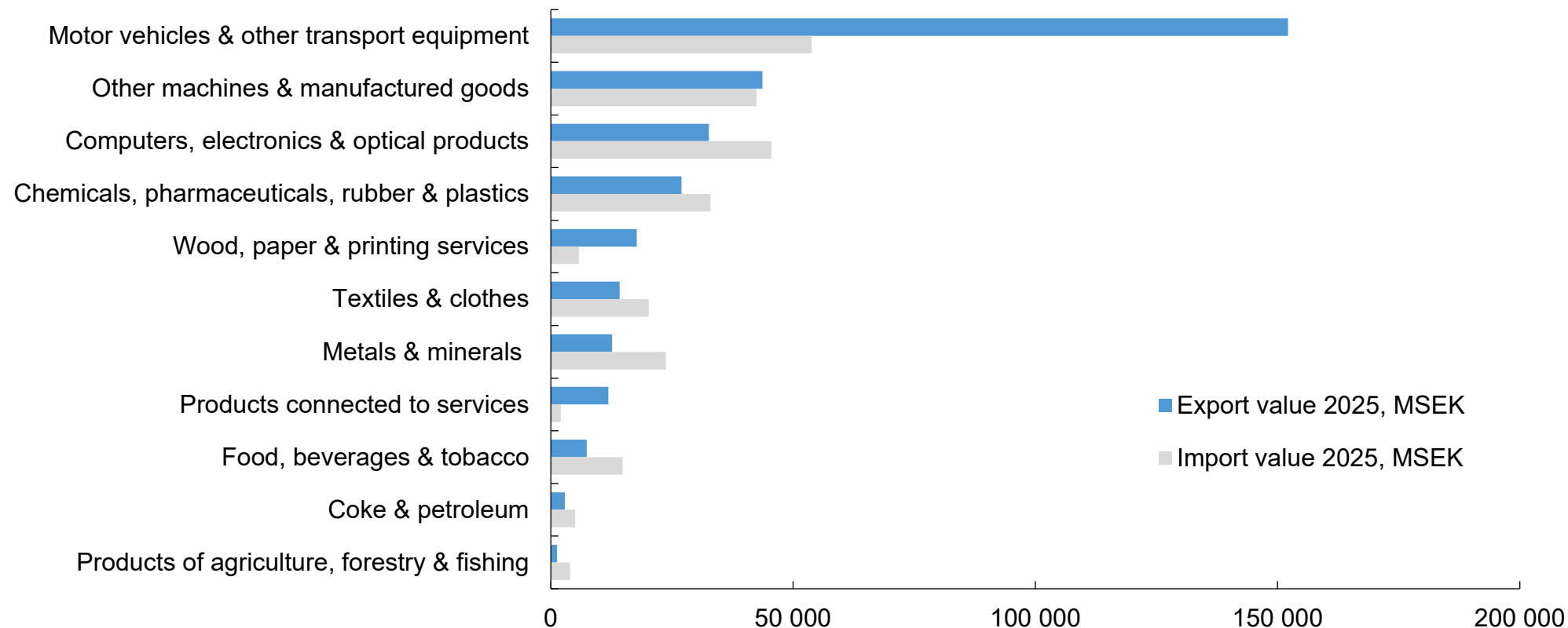
COUNTRY	VALUE OF EXPORTED GOODS, MSEK
USA	57,209
Norway	35,411
Germany	35,204
UK	23,387
Denmark	16,804
France	16,714
China	16,553
Finland	15,200
Netherlands	13,015
Japan	7,584
<b>Västra Götalands County total</b>	<b>405,995</b>
<b>Gothenburg region total</b>	<b>323,251</b>
<b>Gothenburg region's share of Swedish exports</b>	<b>16%</b>





# The composition of the region's exports and imports

EXPORTS AND IMPORTS OF GOODS, BY PRODUCT GROUP 2025

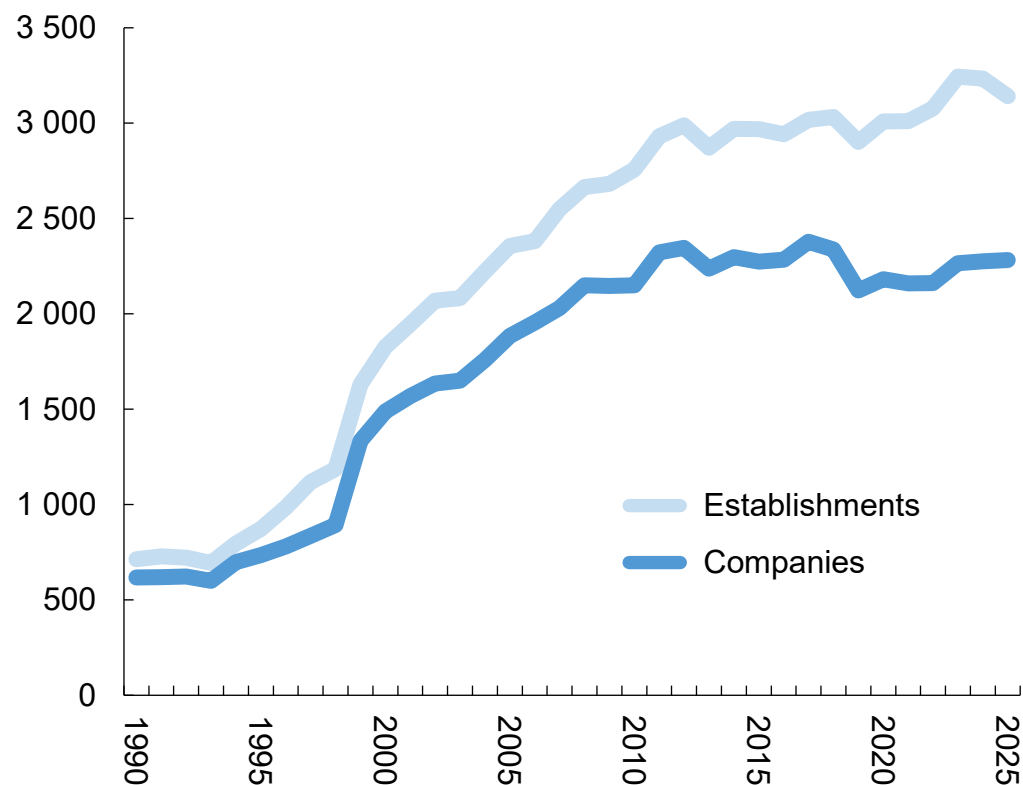


Source: Statistics Sweden

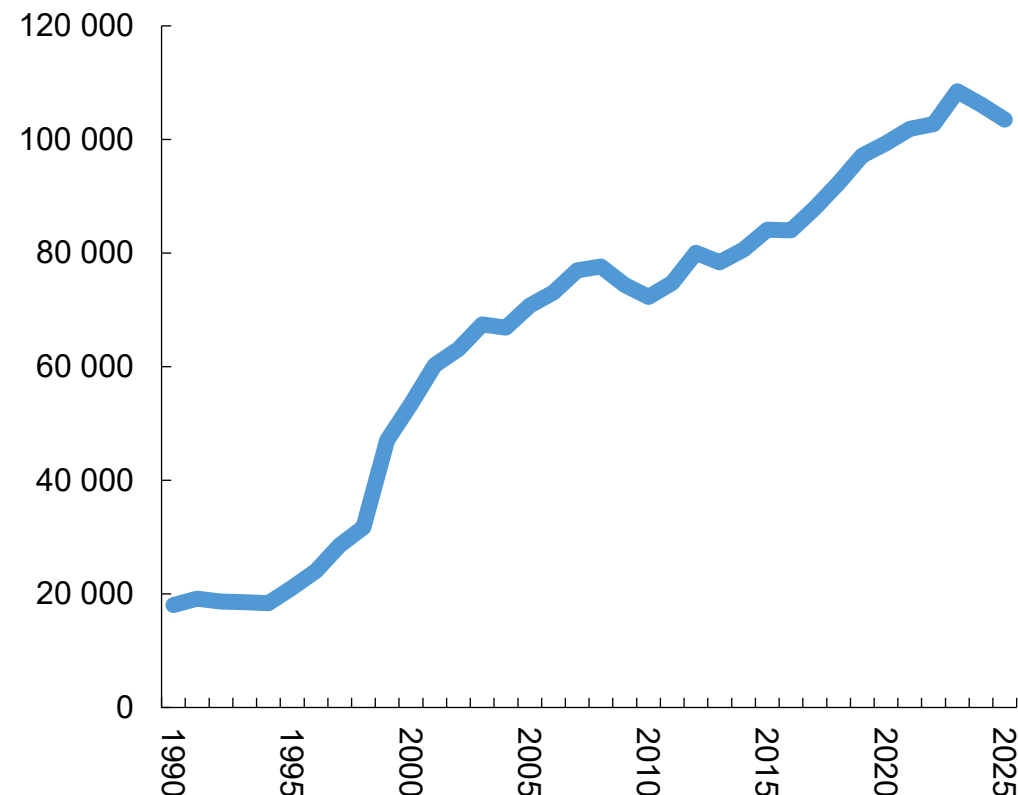


## Many foreign-owned companies in the region with many employees

FOREIGN-OWNED COMPANIES AND ESTABLISHMENTS IN GOTHENBURG REGION, 1990-2025



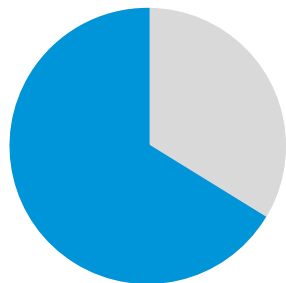
NUMBER OF EMPLOYEES IN FOREIGN-OWNED COMPANIES IN GOTHENBURG REGION, 1990-2025



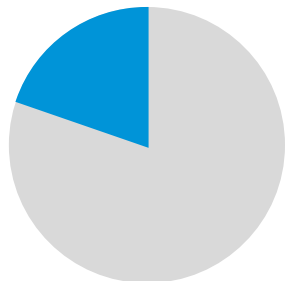
Source: Statistics Sweden



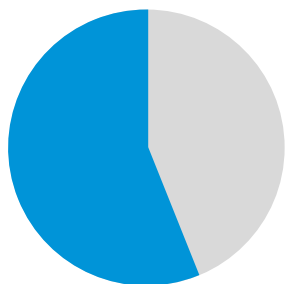
## Port of Gothenburg – Scandinavia's largest port



**70%**  
...of Scandinavia's industry and population falls within a radius of 500 km, including three capital cities

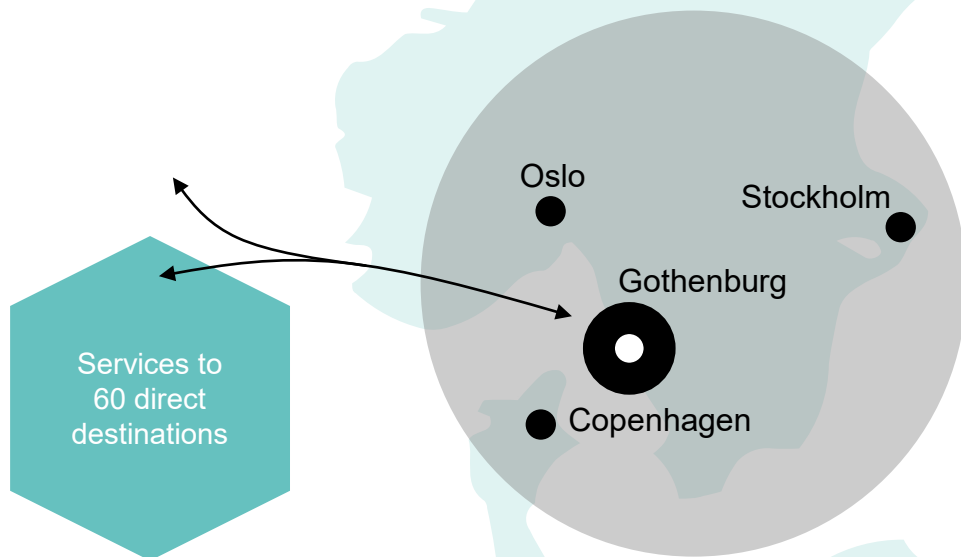


**20%**  
...of all Sweden's foreign trade goes through the Port of Gothenburg



**55%**  
...of Sweden's container trade is handled at the Port of Gothenburg

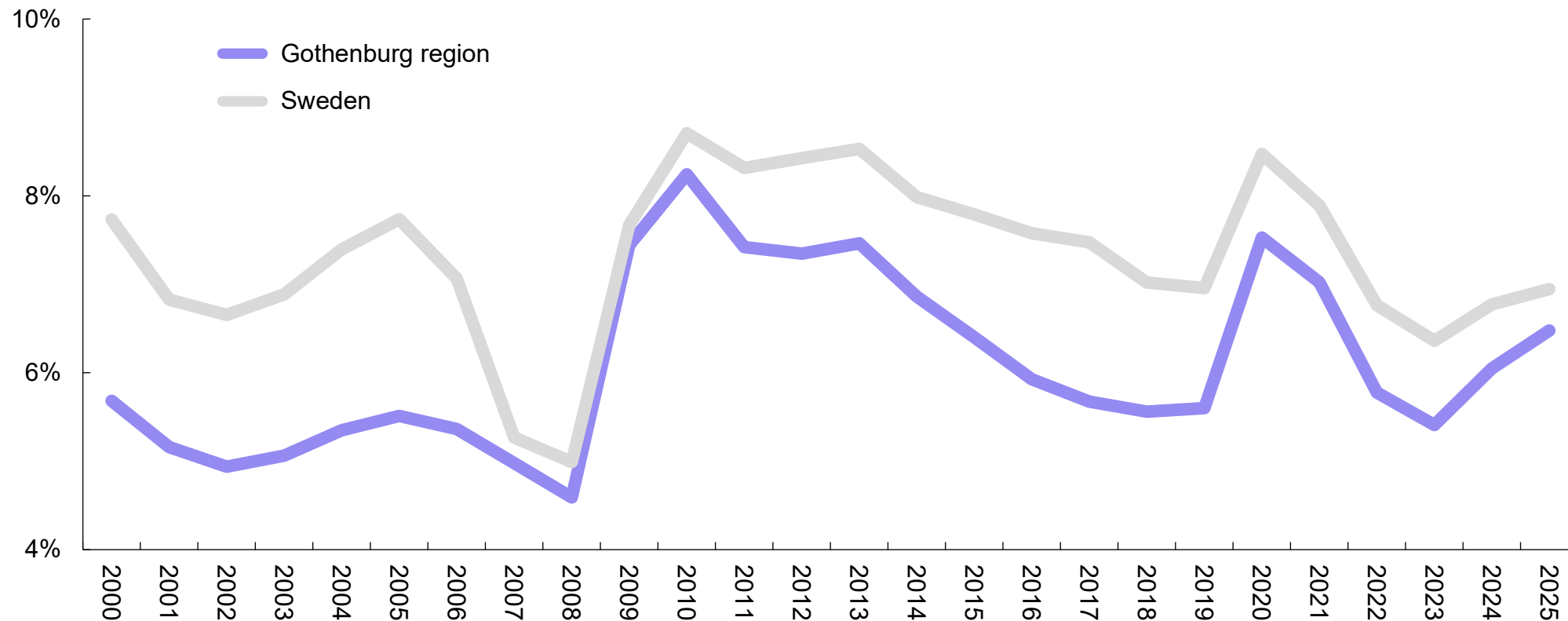
Services to  
60 direct  
destinations





## Lowest unemployment among metropolitan regions

UNEMPLOYMENT AMONG PERSONS 16-65 YEARS OLD, ANNUAL AVERAGE FROM YEAR 2000

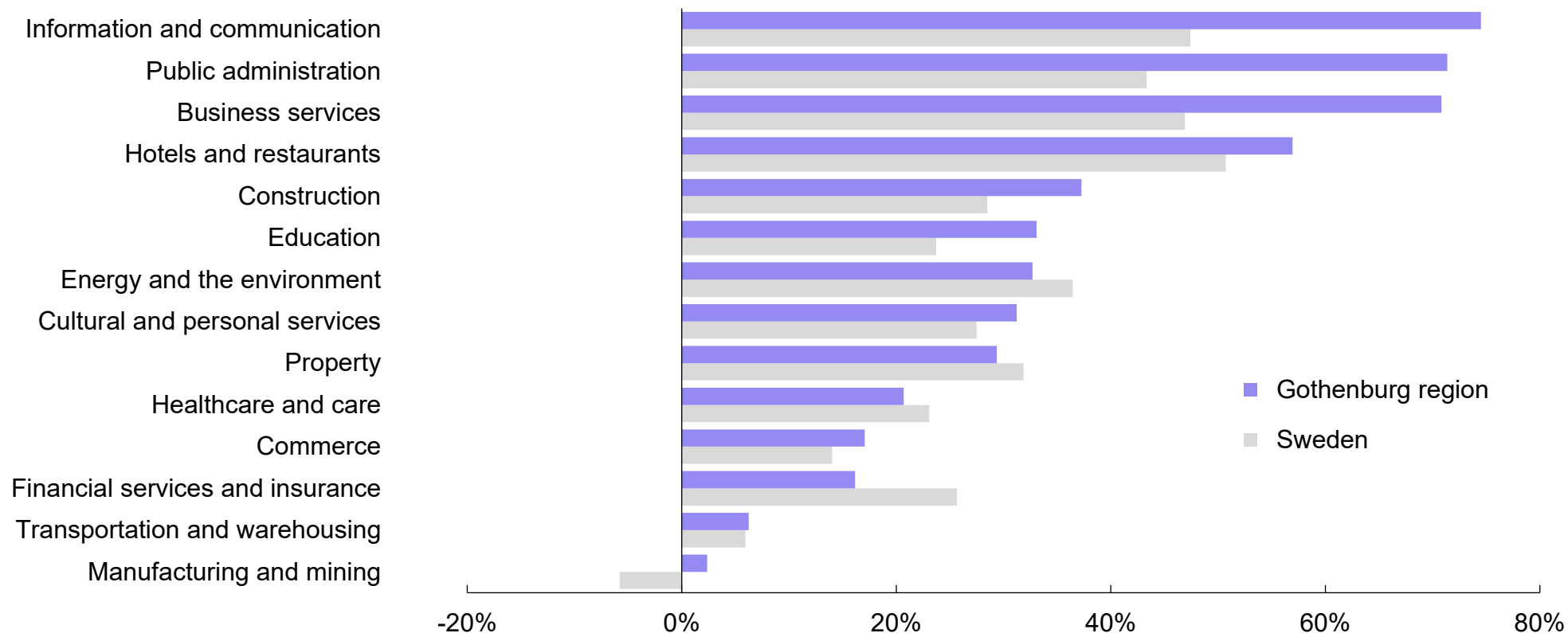


Source: Swedish Public Employment Service



# Greatest job growth in information and communication

PERCENTAGE CHANGE IN EMPLOYMENT, BY SECTOR 2009-2024

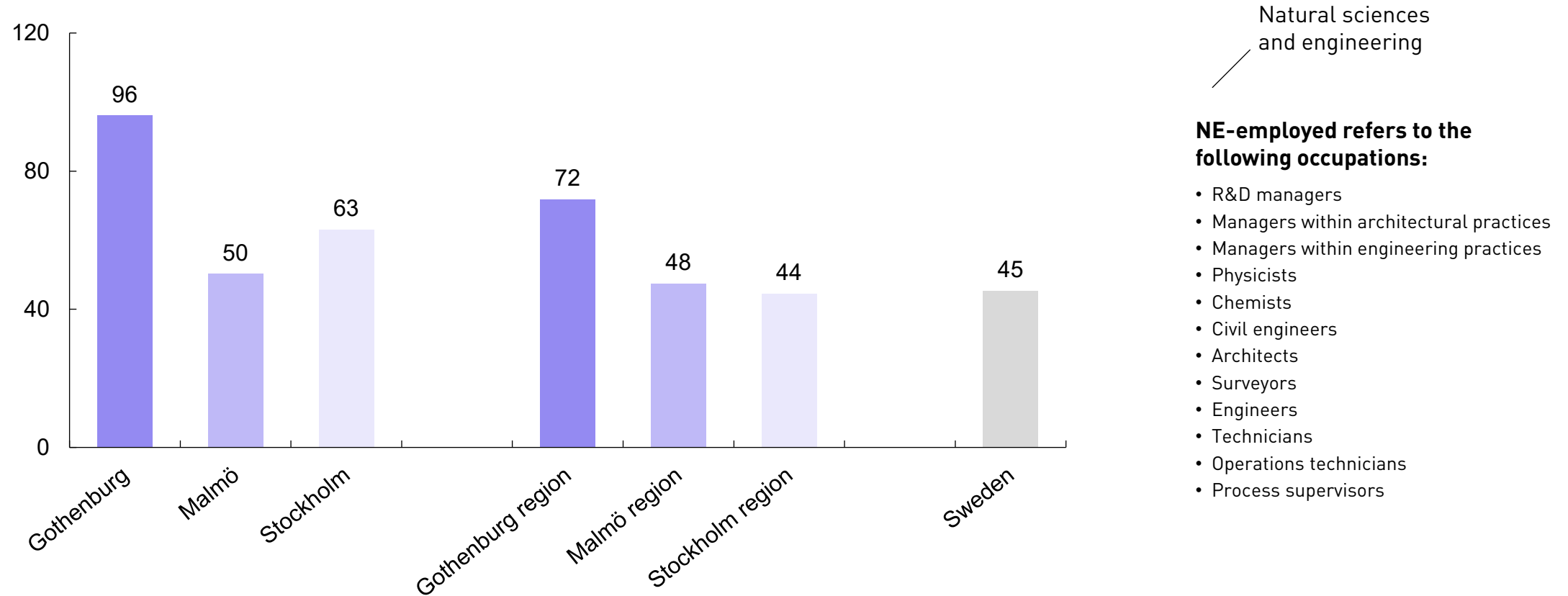


Source: Statistics Sweden



# Sweden's centre for scientific and technical work

NUMBER OF NE-EMPLOYED PERSONS PER 1,000 RESIDENTS 16-65 YEARS OF AGE, 2024

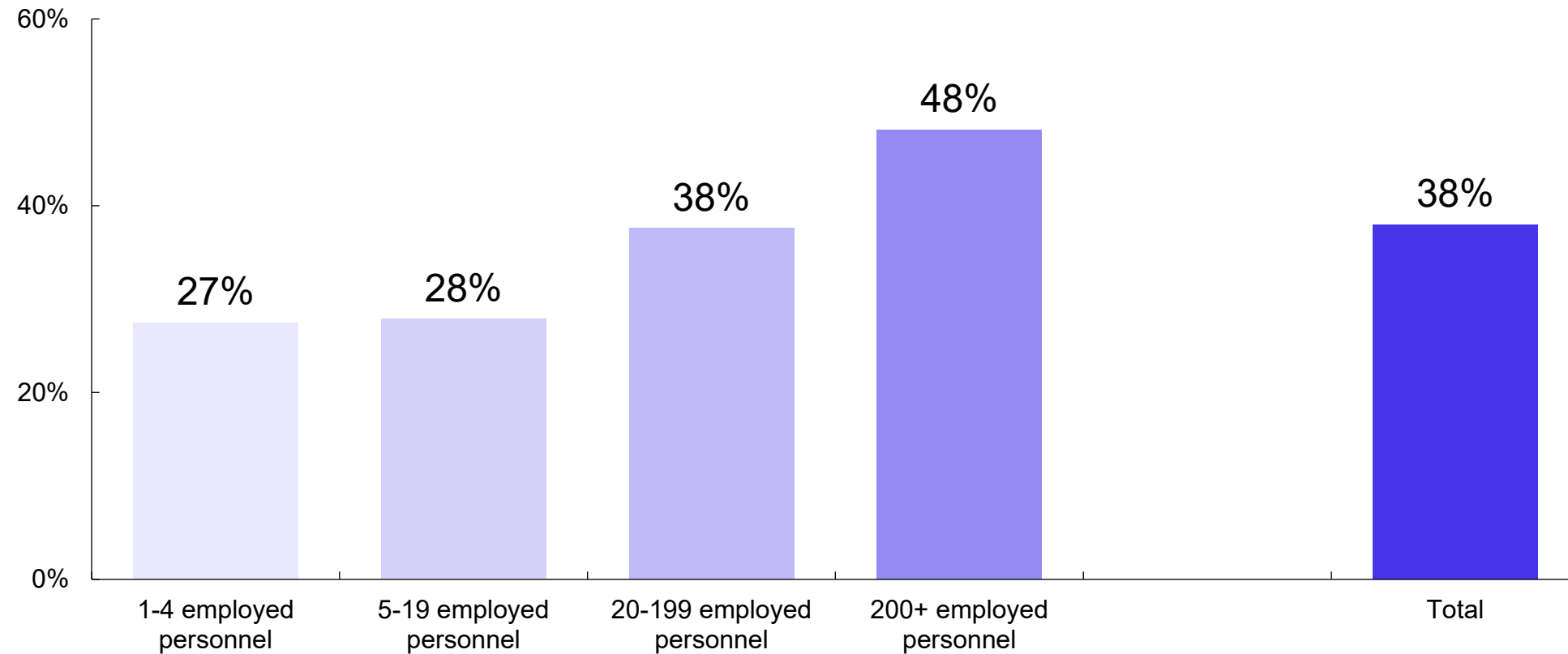


Source: Statistics Sweden



## Growth in employed personnel by companies' size category

PERCENTAGE CHANGE IN EMPLOYED PERSONNEL,  
BY SIZE CATEGORY OF THE ESTABLISHMENT 2009-2025



Source: Statistics Sweden



# The region's largest companies

## By employed, number

Rank	Company	Year 2025
1	Volvo Cars	16,475
2	Volvo Technology*	4,175
3	Veteranpoolen	3,825
4	Volvo Trucks*	3,525
5	Chalmers University of Technology	3,375
6	SAAB	2,925
7	AstraZeneca	2,725
8	Samhall	2,125
9	SKF	1,950
10	Lernia Bemanning	1,725

\* Part of the Volvo Group, which employs approximately 12,700 people in the Gothenburg region.

## By market value, MSEK

Company	01-03-2026
Volvo Group	696,979
Latour	144,156
SKF	115,461
Balder	79,325
Volvo Cars	70,555
Castellum	57,891
Getinge	54,256
Wallenstam	29,489
New Wave Group	13,322
Vitrolife	12,576

## By turnover, MSEK

Company	31-12-2024
Volvo Group	526,816
Volvo Cars	400,234
SKF	98,722
Stena Sphere*	93,215
Hedin Mobility Group	92,300
Carl Bennet**	86,300
Willys	45,782
Cellmark	39,254
Bilia	39,151
Latour	25,886

\* Reported here as a group including Stena and Stena Metall.

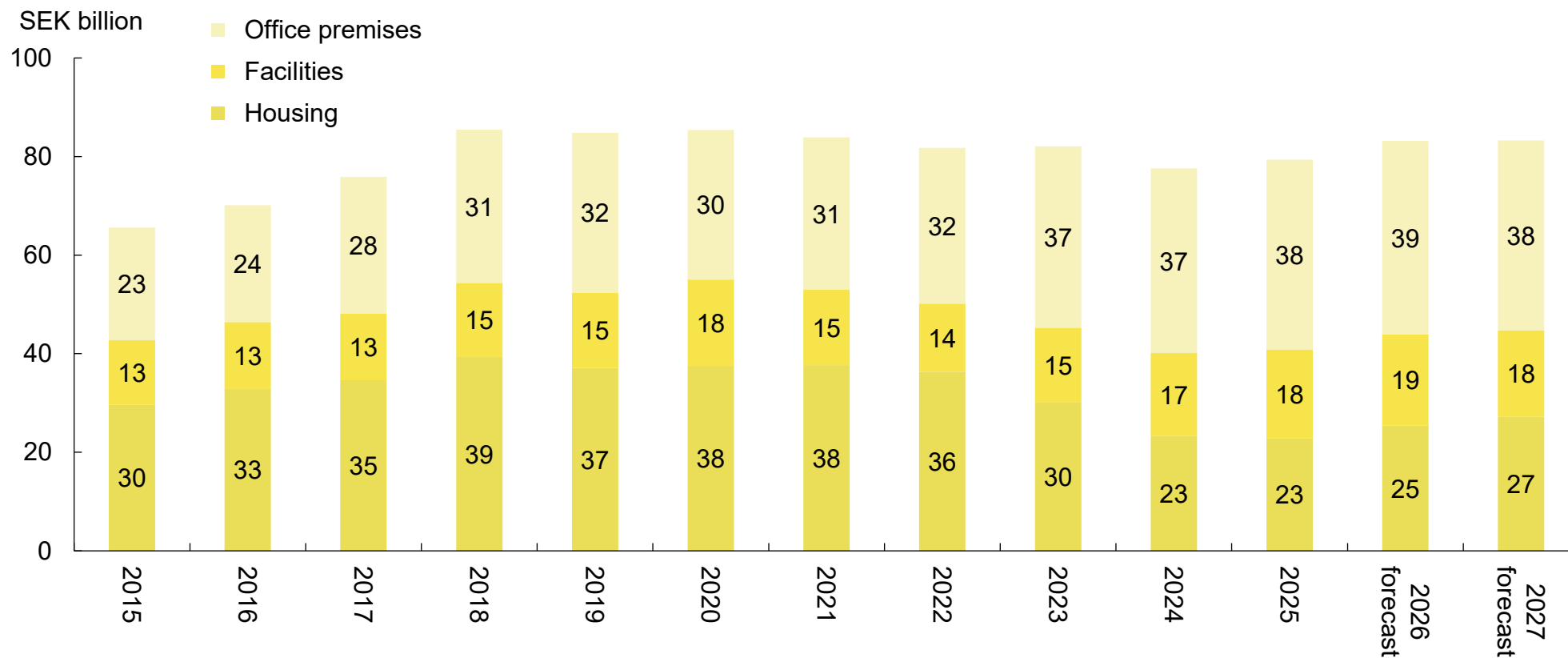
\*\* Reported here as a group including Getinge, Arjo, Lifco and Elanders.

Source: Statistics Sweden (employed), Avanza (market value) and the companies' annual reports (turnover)



# Investments in housing and offices in the Gothenburg region

REAL INVESTMENT VOLUME IN SEK BILLION IN OFFICES, FACILITIES AND HOUSING IN THE GOTHENBURG REGION - FROM 2015



Source: Swedish Construction Federation



# The region's private sector generates high value added

## VALUE ADDED IN MSEK BY SECTOR 2024

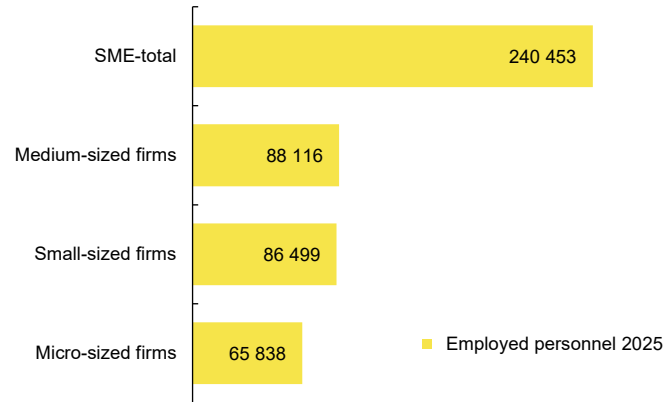
SECTOR	VALUE ADDED 2024, MSEK	SHARE OF TOTAL
Business services	175,492	23.1%
Manufacturing and mining	138,895	18.3%
Commerce	101,341	13.3%
Information and communication	75,425	9.9%
Property	66,984	8.8%
Construction	58,738	7.7%
Transportation and warehousing	49,879	6.6%
Healthcare and care	19,114	2.5%
Hotels and restaurants	18,997	2.5%
Cultural and personal services	15,045	2.0%
Energy and the environment	13,819	1.8%
Financial services and insurance	13,679	1.8%
Education	8,927	1.2%
Agriculture, forestry and fishing	2,933	0.4%
Unknown	77	0.0%
Public administration	30	0.0%
<b>Gothenburg region total</b>	<b>759,376</b>	<b>100.0%</b>

Source: Statistics Sweden

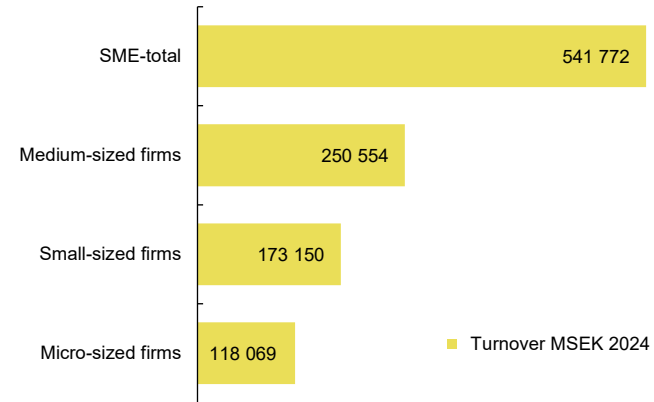


## The region's SMEs account for...

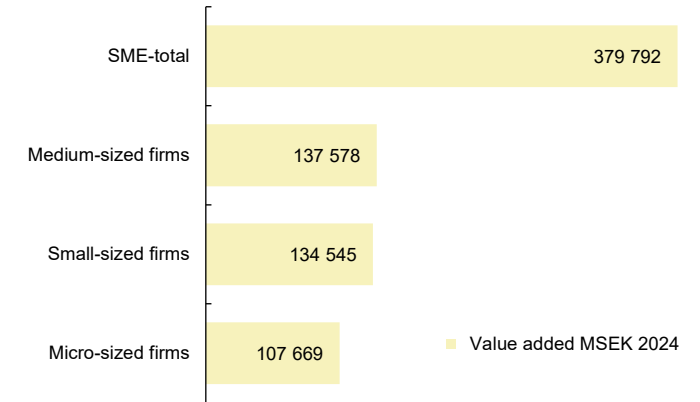
**41%**  
of the region's  
employed personnel  
2025



**27%**  
of the region's  
turnover 2024



**50%**  
of the region's  
value added 2024



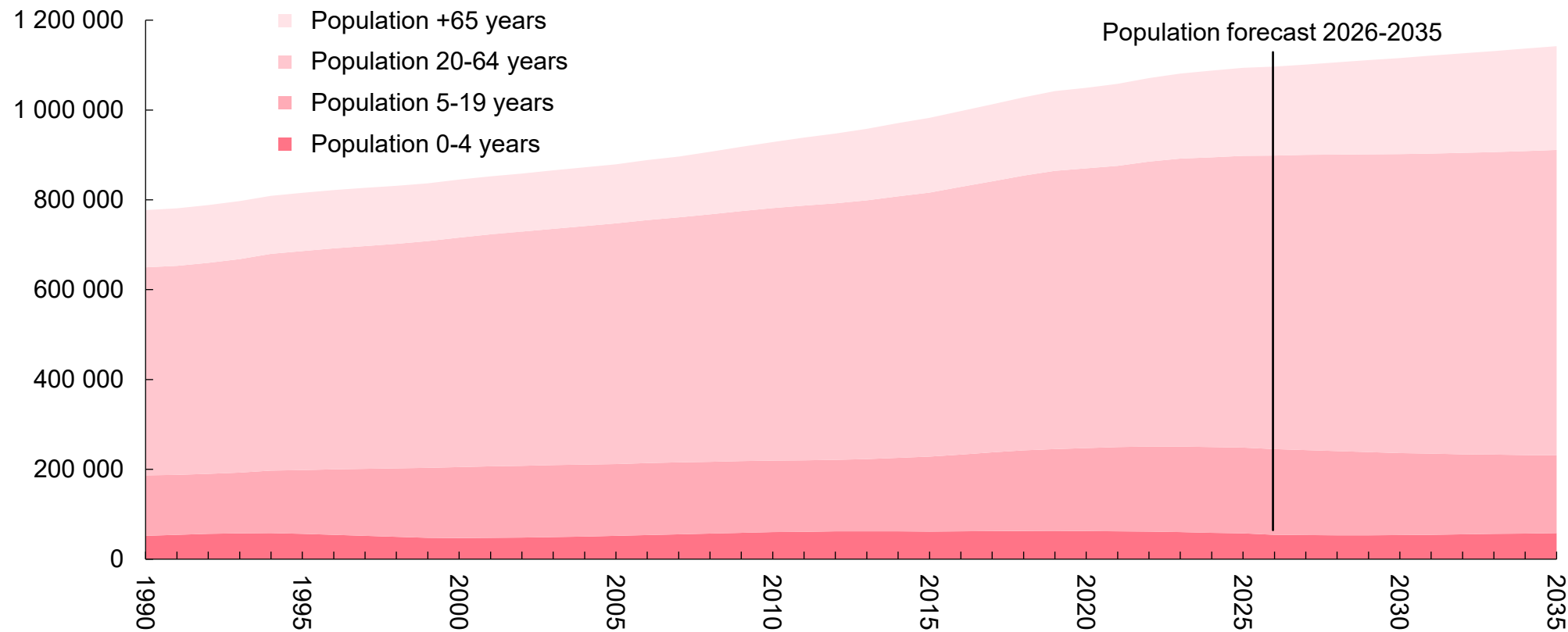


# Population growth continuing

POPULATION IN THE GOTHENBURG REGION 1990-2025 AND FORECAST FOR THE PERIOD 2026-2035

Population 2025:

# 1,093,760



Source: Statistics Sweden



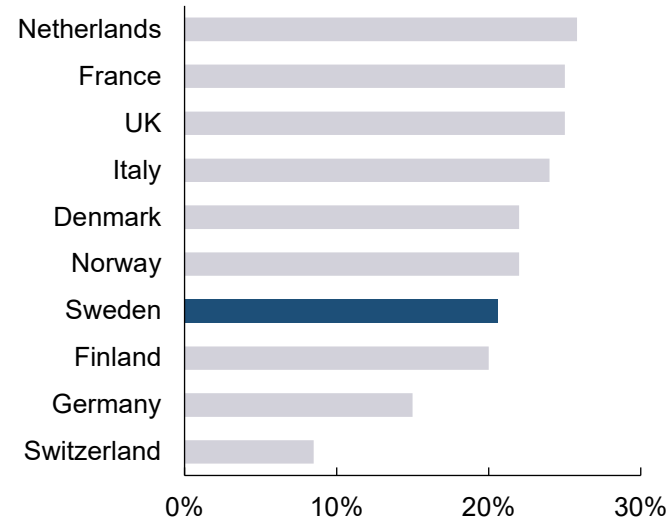
# Costs and taxes

## Employer contributions 2026

Statutory fee	% of wage
Retirement pension	10.21
Survivor's pension	0.30
Health insurance	3.55
Parental insurance	2.00
Occupational injury insurance	0.10
Unemployment insurance	2.64
Payroll contribution	12.62
<b>Total statutory employer contribution</b>	<b>31.42</b>

Source: Swedish Tax Agency

## Corporate taxes 2026



Source: Deloitte 2026

## Comparison of taxes\* 2026

Country	Interest	Dividends	Royalties
<b>Sweden</b>	<b>0%</b>	<b>0%</b>	<b>0%</b>
Denmark	0%	0%	22%
Norway	0%	0%	0%
Finland	0%	20%	20%
France	0%	25%	25%
Germany	0%	25%	15%
Netherlands	0%	0%	0%
UK	0%	0%	20%
USA	0%	30%	30%

\* Rates apply to payments to non-residents

Source: Deloitte 2026



## Salary levels (SEK/month) 2025 in the Gothenburg region

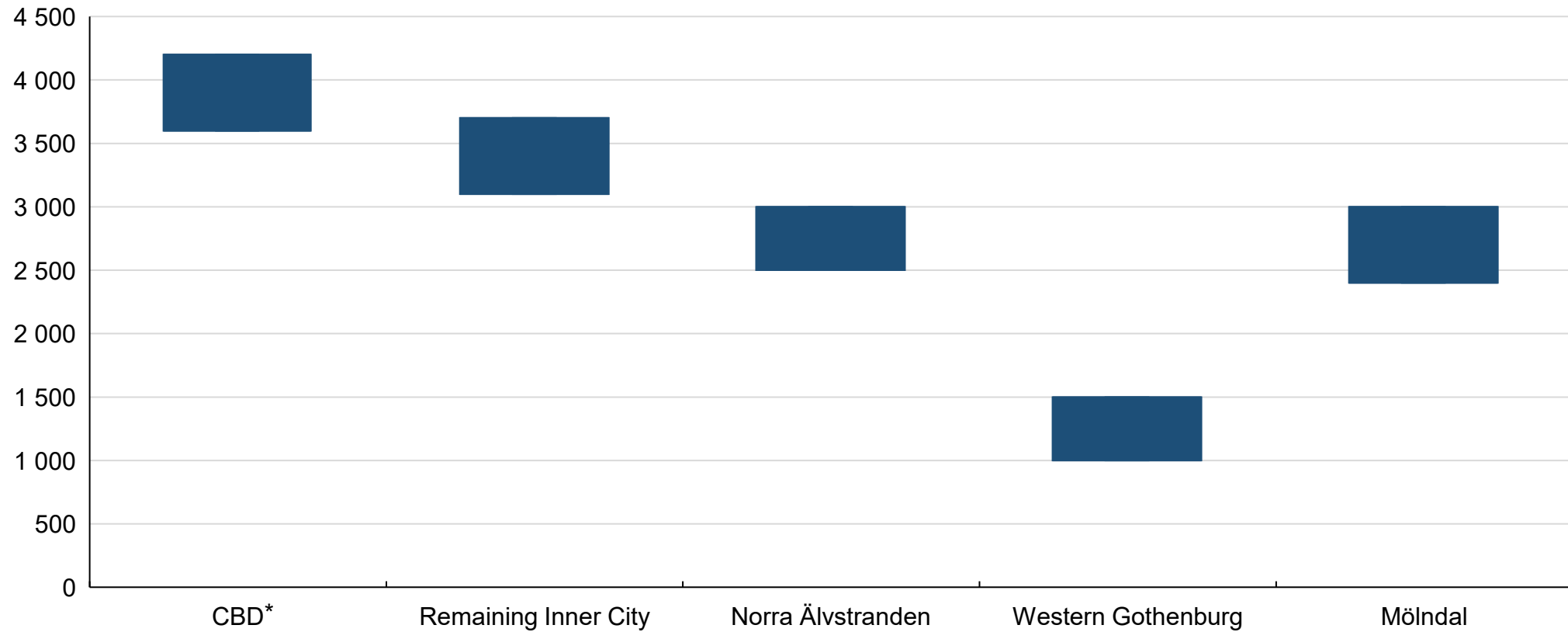
Profession	Monthly salary (SEK)			
	10th percentile	40th percentile	60th percentile	90th percentile
Economics and finance managers	49 500	70 800	87 000	140 300
Economics and finance operation managers	47 400	65 000	77 300	112 800
Human resources managers	50 100	71 500	85 000	125 400
Human resources operation managers	48 600	65 000	77 900	116 400
Management and planning managers	54 300	77 700	93 800	167 800
Management and planning operations managers	37 500	51 800	72 000	110 700
Sales and marketing managers	50 000	68 700	80 300	117 600
Sales and marketing operations managers	50 100	67 000	76 800	109 100
IT managers	56 300	73 500	87 400	123 100
IT operations managers	57 100	72 700	81 500	107 700
Managers in information, communication and PR	48 000	77 600	91 300	148 500
Operations managers in information, communication and PR	43 400	62 900	76 000	107 800
Managers in purchase, logistics and transportation	45 200	61 700	74 900	111 700
Operations managers in purchase, logistics and transportation	42 500	57 700	68 100	96 700
Auditors, accountants and economists	33 000	43 800	54 000	74 400
Organisation development experts	40 600	52 900	61 200	84 200
Market analysts and marketing specialists	37 100	49 600	57 700	79 000
Systems analysts and software engineers	43 200	56 000	62 200	79 500
Software and systems developers	40 200	50 000	55 800	69 100
Engineers and technicians in construction	36 400	44 500	50 500	65 500
Engineers and technicians in electrotechnology	38 100	48 200	54 000	66 600
Engineers and technicians in chemistry and chemical engineering	35 600	40 300	47 000	61 500
Computer technicians	33 900	43 000	48 100	60 000
Business salesperson	36 900	48 900	56 700	74 600
Purchasers and procurers	38 100	46 300	53 300	70 000
Administrative assistants	28 200	35 600	39 400	50 800

Source: Almega, September 2025



# Office rental in Gothenburg

OFFICE LEASES BY AREA IN GOTHENBURG, 2025



Source: JLL

\* Central Business District



# Nordic cost comparison 2026



An inexpensive meal



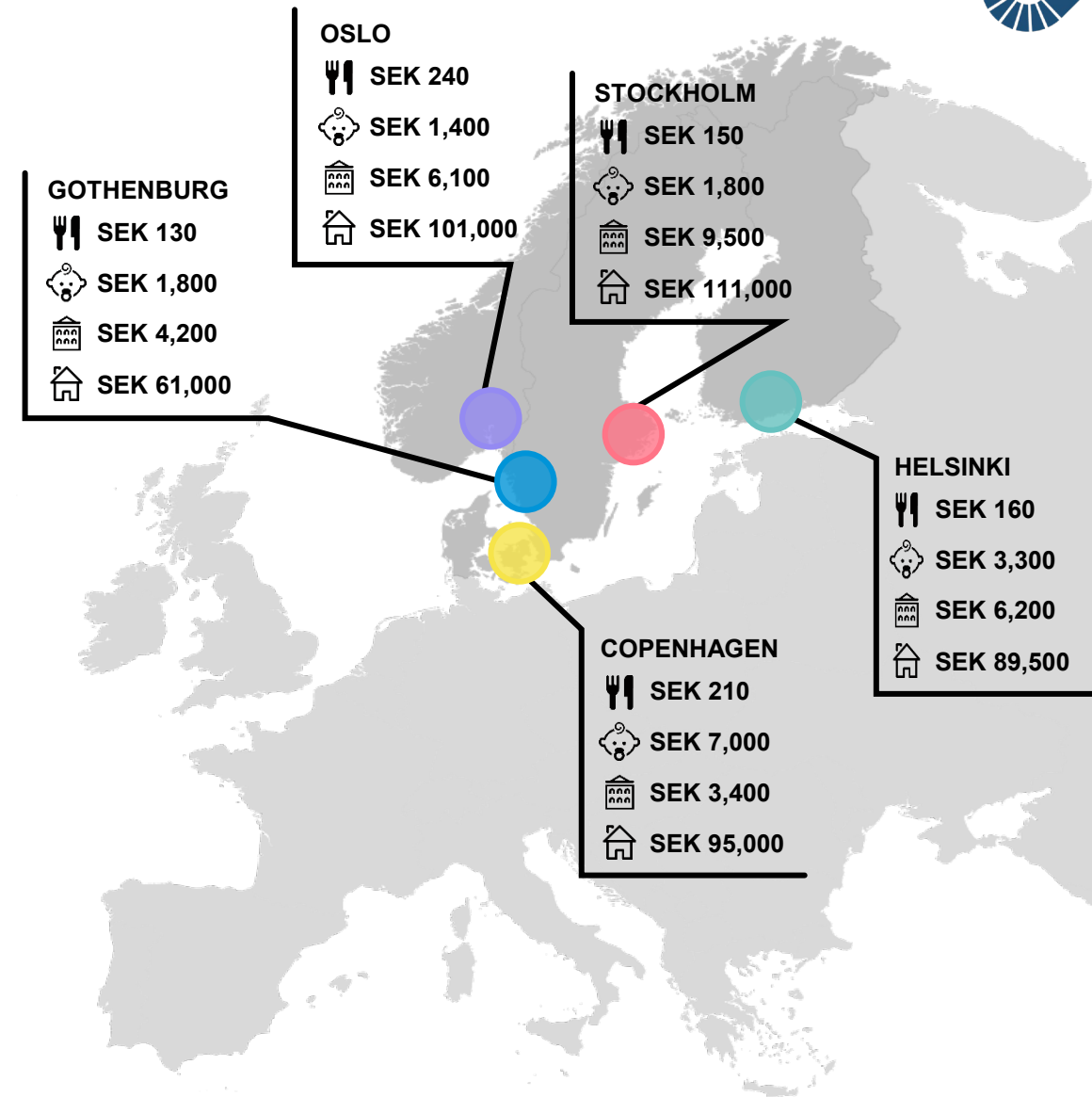
Maximum monthly fee for 1 child including food at preschool



Office rent per m<sup>2</sup> CBD / year



Average price per m<sup>2</sup> for a city apartment



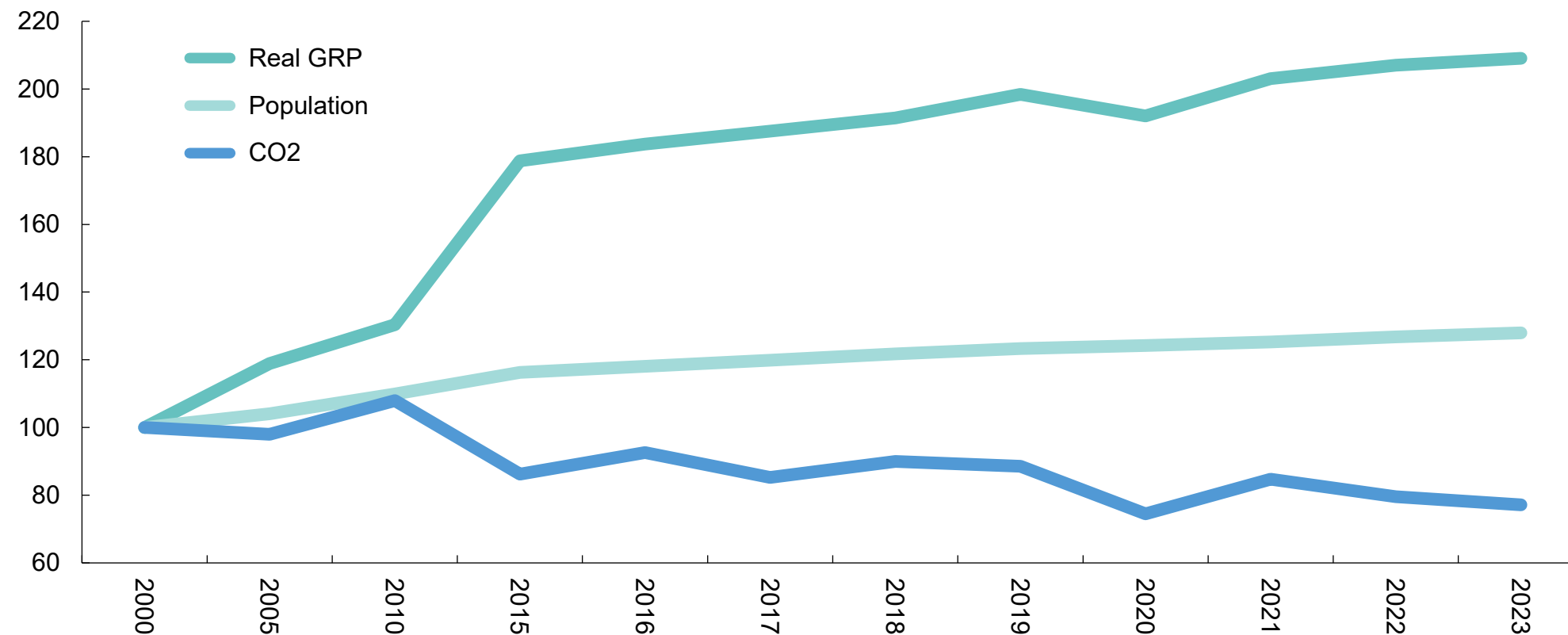
Source: Numbeo, each city's official homepage and JLL

**Note:** Exchange rates from NOK to SEK, DKK to SEK and Euro to SEK retrieved on 20 February 2026



## CO<sub>2</sub> emissions and economic activity

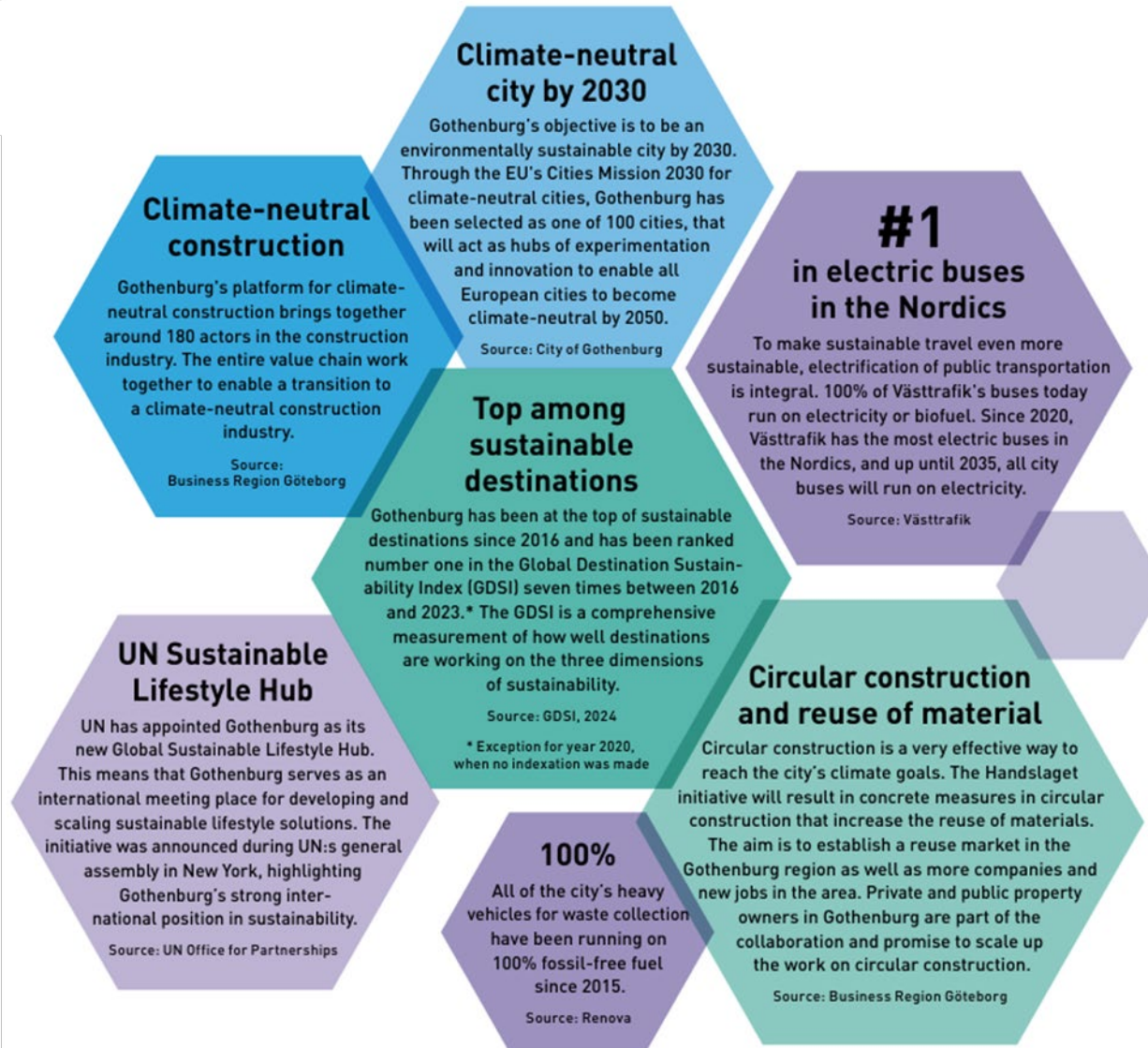
REAL GROSS REGIONAL PRODUCT (GRP), POPULATION AND CO<sub>2</sub> IN THE GOTHENBURG REGION (INDEX 2000 = 100)



Source: Statistics Sweden and Swedish National Emissions Inventory



## Did you know this...



# 46 billion...

...SEK has been issued in green bonds since 2013.

Source: City of Gothenburg



BUSINESS REGION GÖTEBORG IS THE ECONOMIC DEVELOPMENT AGENCY AND INVESTMENT PROMOTION AGENCY OF GOTHENBURG  
– PART OF THE CITY OF GOTHENBURG IN COLLABORATION WITH THE REGION